



WORLD'S BEST
ALLOY BULLBARS

East Coast Bullbars (ECB Pty Ltd)

Tel: 07 3897 5700

Fax: 07 3283 1168

ecb@ecb.com.au www.ecb.com.au

29 Snook St
Clontarf QLD 4019
Australia

Po Box 122
Margate QLD 4019
Australia

BK47SY

REPLACES: 16.06.09
REVISED: 17.01.18

FITTING INSTRUCTIONS

KIA SORRENTO 12/06-09/09 BIG TUBE™ BAR (WITH FOG LAMPS) VEHICLE FRONTAL PROTECTION SYSTEM (VFPS) FOR AIR BAG & ADR COMPLIANT VEHICLES

Check installation hardware before commencing.

1. Lift Bonnet
2. Remove radiator surround cover. Ten plastic screw clips.
3. Remove headlights. Two 10mm head bolts in centre and one 10mm head bolt on top. Headlamp comes out to front of vehicle to release plastic retaining clip underneath. **CAUTION:** If headlight is lifted or twisted, damage to guard could result. Move headlight forward only.
4. Remove eight plastic screw clips from bumper cover top trim between lights.
5. Remove ten plastic screw clips from top of bumper and one 10mm head bolt behind front edge of guard under headlight (per side). From under vehicle, remove two plastic screw clips from in front of wheels (per side). Start vehicle and turn wheels fully to one side. Remove one plastic screw clip from under front of wheel arch and drop inner guard away from bumper. Remove PK screw from under rear of bumper wing.
6. Remove bumper.
7. Remove steel bumper support. Two 14mm head nuts and two 14mm bolts and nuts (per side).
8. Remove bumper side supports. Two 10mm head bolts and one 10mm nut, one from front, two from bottom (per side)
9. Install ECB steel mounting bracket (supplied) by sliding steel mounting bracket up from underneath, then rearward onto bolts. Use original nuts to external bolts and 7/16 x 1 ½ bolts, flat washers, spring washer and nut (supplied) to inside holes. Refit original nuts to external pins. Centralise mount to vehicle and **TIGHTEN ALL BOLTS. See figure 1.**
10. Refit bumper cover top trim leaving outside plastic screw clips out.
11. Splice ECB wiring harness (supplied) into original wiring harness. Ensure harness runs to outside of vehicle with original fog light wiring so as to not obstruct headlight refit.
12. Fit infill trim (supplied) to 4mm alloy trim support. At cut out in 4mm alloy support, trim rear top half of infill trim away using sharp wire cutters. Fit infill support (supplied) to vehicle where headlights were removed, using original rear screw and two M6 x 20 bolts, flat washers and nyloc nut (supplied). **See figure 2 and 3.**
13. Attach 6mm clip lock trim (supplied) to top of ECB protection bar. **NOTE:** Trim off lower edge on an angle so trim will sit flush with end of protection bar. **See figures 4, 5 and 6.**
14. Fit ECB LED indicator / park lights into protection bar as per instructions supplied with the LED indicator kit. **NOTE:** Ensure park light is to outside. **See figure 7.**



**WORLD'S BEST
ALLOY BULLBARS**

East Coast Bullbars (ECB Pty Ltd)

Tel: 07 3897 5700

Fax: 07 3283 1168

ecb@ecb.com.au www.ecb.com.au

29 Snook St
Clontarf QLD 4019
Australia

Po Box 122
Margate QLD 4019
Australia

15. Attach ECB fog lights to protection bar. Place M6 x 20 bolts, spring washers (supplied) through light mount from inside and attach nut to top. Slide assembly into light mount in Protection bar and centralize light to hole. **TIGHTEN FIRM ONLY. See figure 8.** Do not fit trims at this point.
16. Fit ECB Protection bar to ECB steel mounting bracket using three ½ x 1 ½ bolts, flat washers, spring washers and nuts. **FINGER TIGHTEN ONLY.**
17. Align ECB protection bar to vehicle. Protection bar should be minimum 10mm down from inside of headlights and just touching infill bead. **TIGHTEN ALL BOLTS. See figures 9 and 10**
18. Connect ECB indicator/park light and fog lamp. Ensure wiring is routed in such a manner to avoid any sharp edges etc and fog lamps are pointed forward and at a slightly downward angle. Check for correct operation. Fit Fog light trims (supplied), large side to inside of bar.
19. Fit outer guard panels using one 3/8 x 4 ½ bolt, flat washer, 50 x 50 bolt plate and spacer tube (supplied) from inside of chassis rail, through ECB steel mount plate and ECB outer guard panel, into flat washer, spring washer and nut (per side). Secure front edge to skirt using two M6 x 20 bolts, flat washers and nyloc nuts (per side) (supplied). **TIGHTEN ALL BOLTS. See figure 11.**
20. Refit inner guard behind rear edge of protection bar. Trim area neatly between lower skirt and outer guard panels. Using a ¼ (6mm) drill, secure lower inner guard to outer guard panels using two M6 x 20 bolts, flat washers and Nyloc nuts (supplied). If required, secure inner guard to rear edge of protection bar using one M6 x 20 bolt, flat washers and nyloc nut (per side) (supplied).
21. Fit alloy bash plate(supplied) to top of centre skirt and steel under body cover using five M6 x 20 bolts, flat washers and nyloc nuts. Fit three vent covers (supplied) with ECB insignia to bottom to allow full vent flow to engine intercooler. **TIGHTEN ALL BOLTS. See figure 12.**

ENSURE NUMBER PLATE IS CLEARLY VISABLE

Note: When fitting/refitting the licence plate to the vehicle, ensure there is no obstruction to licence plate vision in accordance with local authorities. If required relocate licence plate to an alternate location.

Further VFPS Notes:

- a) Do not attach VFPS to the vehicle using anchorages not intended for this purpose (e.g. engine mounting bolts).
- b) Do not use this product for any vehicle make or model, other than those specified by the VFPS manufacturer.
- c) Do not remove the plaque or label from the VFPS.
- d) Do not modify the structure of the VFPS in any way.
- e) No accessory or fitment should project forward of the VFPS forward profile.
- f) **ENSURE THESE INSTRUCTIONS ARE LEFT WITH VEHICLE OWNER AND/OR OPERATOR.**

IMPORTANT INFORMATION

Periodically check bolts and nuts for correct tightness, especially if travelling on rough roads



East Coast Bullbars (ECB Pty Ltd)

Tel: 07 3897 5700

Fax: 07 3283 1168

ecb@ecb.com.au www.ecb.com.au

29 Snook St
Clontarf QLD 4019
Australia

Po Box 122
Margate QLD 4019
Australia

**WORLD'S BEST
ALLOY BULLBARS**

FITTING KIT

1 – ECB Steel mount bracket	4 – 7/16 spring washers
1 – ECB Alloy bash plate	4 – 7/16 nuts
2 – ECB Alloy Outer guard panels	19 – M6 x 20 bolts
2 – ECB Alloy trim supports	36 – M6 flat washers
1 – ECB LED Indicator / Park light kit.	17 – M6 Nyloc nuts
1 – Pair ECB fog light	2 – M6 nuts and spring washers
2 – Fog light trims	6 – ½ x 1 ½ bolts
3 - ECB 3mm skirt vents (for bash plate)	12 – ½ flat washers
1 – 2500mm length 6mm clip lock	6 – ½ spring washers
2 – 850mm length 6mm infill trim	6 – ½ nuts
10 – Cable locks	2 – 3/8 x 4 ½ bolts
2 – 68mm length, 13nb spacer tubes	4 – 3/8 flat washers
2 – 50mm square washer, 10mm hole	2 – 3/8 spring washers
4 – 7/16 x 1 ½ bolts	2 – 3/8 nuts
8 – 7/16 flat washers	



Figure 1: Steel Mounting Bracket

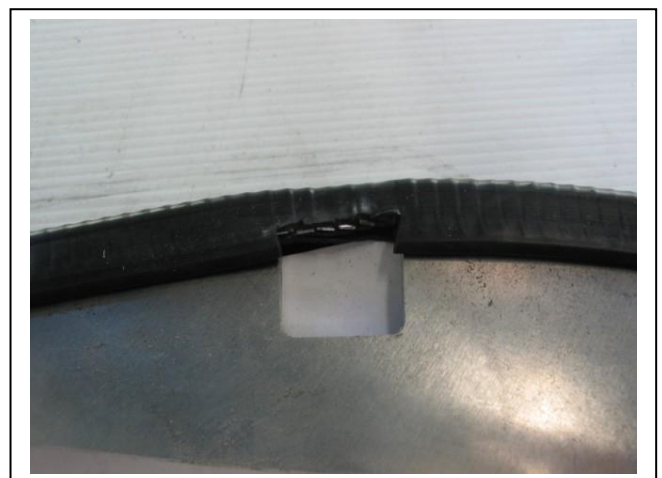


Figure 2: Trim on 6mm clip lock trim

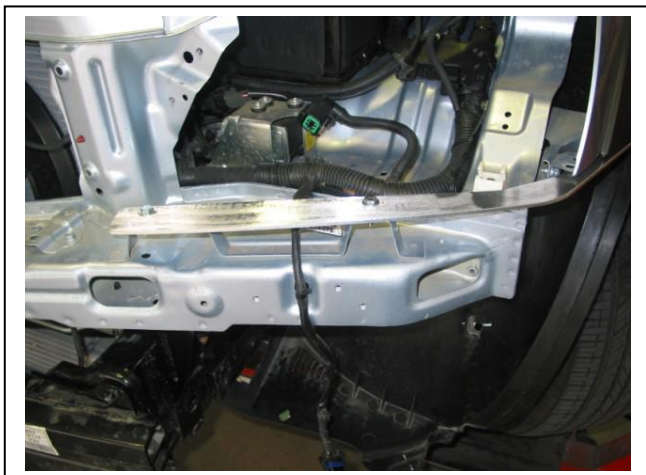


Figure 3: ECB Alloy trim support, fitted without infill trim for photo purposes.

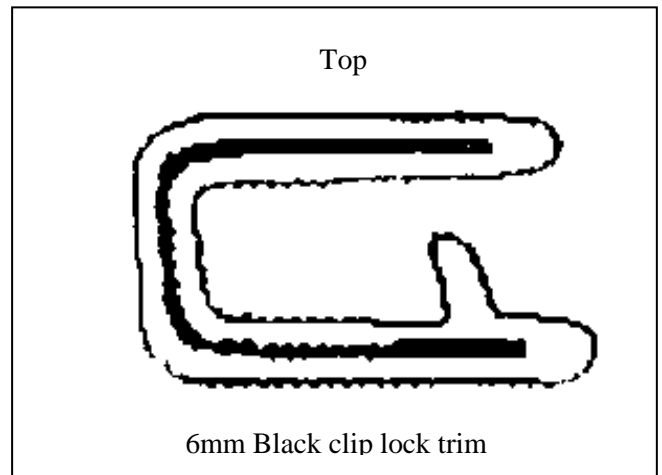


Figure 4



East Coast Bullbars (ECB Pty Ltd)

Tel: 07 3897 5700

Fax: 07 3283 1168

ecb@ecb.com.au www.ecb.com.au

WORLD'S BEST
ALLOY BULLBARS

29 Snook St
Clontarf QLD 4019
Australia

Po Box 122
Margate QLD 4019
Australia

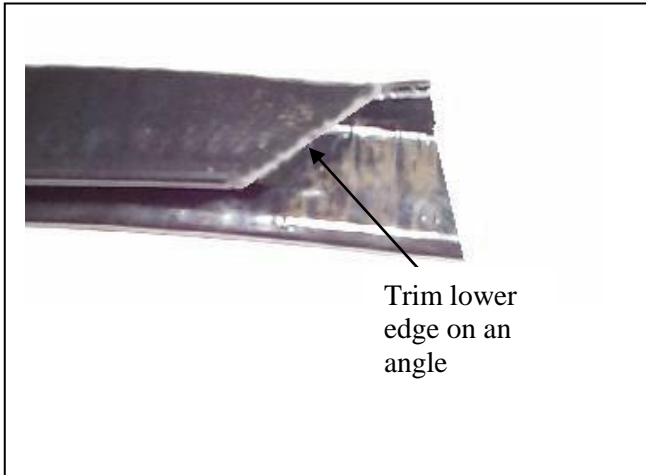


Figure 5

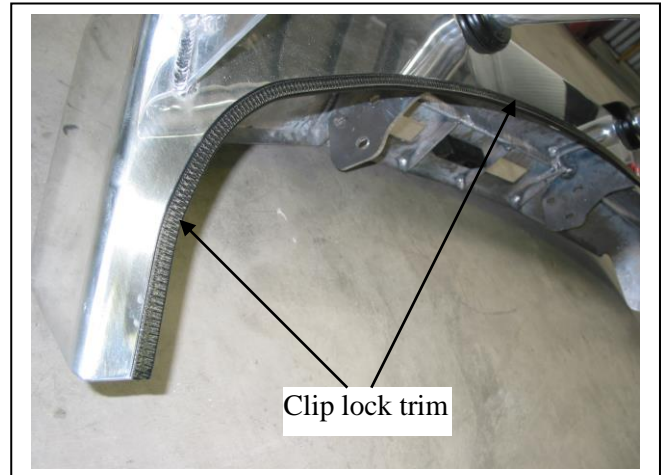


Figure 6

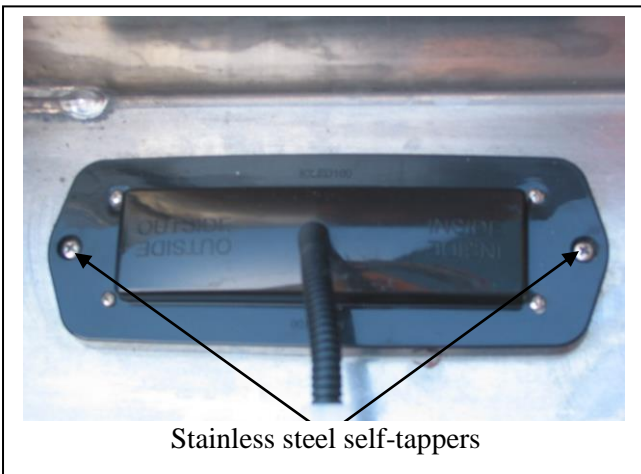


Figure 7

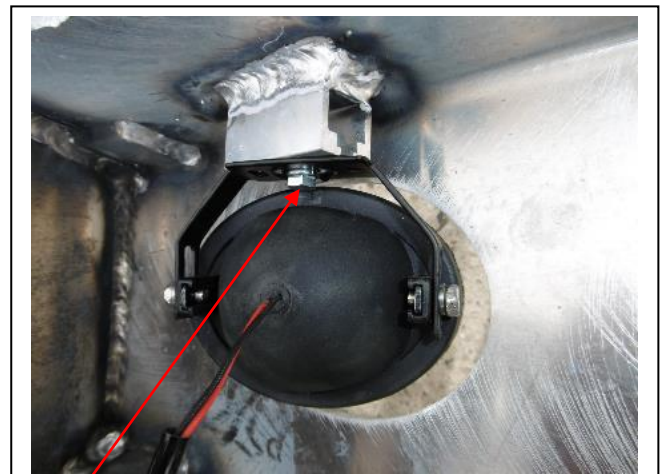


Figure 8



Figure 9: Front view shown



Figure 10: Side view shown



East Coast Bullbars (ECB Pty Ltd)

Tel: 07 3897 5700

Fax: 07 3283 1168

ecb@ecb.com.au www.ecb.com.au

29 Snook St
Clontarf QLD 4019
Australia

Po Box 122
Margate QLD 4019
Australia

WORLD'S BEST
ALLOY BULLBARS



Figure 11: Passengers outer guard plate shown



Figure 12: Under body Alloy Bash plate, with 3mm air vents fitted, ECB logo to bottom



**WORLD'S BEST
ALLOY BULLBARS**

East Coast Bullbars (ECB Pty Ltd)

Tel: 07 3897 5700

Fax: 07 3283 1168

ecb@ecb.com.au www.ecb.com.au

29 Snook St
Clontarf QLD 4019
Australia

Po Box 122
Margate QLD 4019
Australia

We value your comments

Dear Fitter,

ECB would like to know how you went with the installation of this product. We value your comment and may need to contact you to clarify some details so please complete your contact details clearly.

We would appreciate if you could complete as many of the following details as possible.

Your Name:	Your contact No.
Product Part No.	Product Invoice No.
Product Description:	Make, model, and year of vehicle:
Product Work Order No.	Company your from/Company product purchased from:

Date of Fitment: ____/____/____

Was the fitting hardware supplied complete?

Yes

No

If no what was not supplied

Did the installation go well?

Yes

No

Please provide comments

Please draw diagrams if you need to.

Post to
Reply Paid 122
PO Box 122
Margate QLD 4019

Fax to
(07) 3283 1168



WORLD'S BEST
ALLOY BULLBARS

East Coast Bullbars (ECB Pty Ltd)

Tel: 07 3897 5700

Fax: 07 3283 1168

ecb@ecb.com.au www.ecb.com.au

29 Snook St
Clontarf QLD 4019
Australia

Po Box 122
Margate QLD 4019
Australia

DESPATCH CHECKLIST BK47SY

ICZBKCK47



Work Order #	
Finish:	
Transport:	
Due Date:	

- 1 – ECB Steel mounting bracket.
- 1 – ECB Alloy bash plate.
- 2 – ECB Alloy outer guard panels.
- 2 – ECB Alloy trim supports.
- 1 – Bolt Kit.
- 1 – LED ECB indicator / park light kit.
- 1 – Pair ECB fog lights.
- 2 – Fog lamp trims.
- 3 – ECB 3mm skirt vents (for bash plate) **Include in fit kit.**
- 1 – 2500mm length 6mm clip lock.
- 2 – 850mm lengths 6mm infill trim.
- 2 – ECB overrides – **Fitted to bar.**
- 6 – 6mm air scoops – **Fitted to bar.**

**See other side of
this page for
photos of all
mounts**



Is this product “the best it can be” Yes _____ / _____
Wrapper’s initials / Checker initials

If **NO** fix before continuing

All parts checked and completed by:

Nut and bolts: _____ Date ___/___/___

Order control: _____ Date ___/___/___

Final wrap check: _____ Date ___/___/___



East Coast Bullbars (ECB Pty Ltd)

Tel: 07 3897 5700

Fax: 07 3283 1168

ecb@ecb.com.au www.ecb.com.au

29 Snook St
Clontarf QLD 4019
Australia

Po Box 122
Margate QLD 4019
Australia

WORLD'S BEST
ALLOY BULLBARS

